

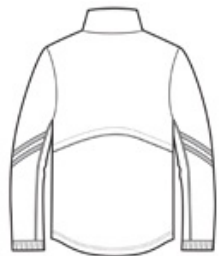


Wet, windy days are no match for our water-repellent, wind-resistant pullover. It features ventilating back vents and a side seam zipper for easy on/off.

- 100% polyester ripstop with DWR finish
- 100% polyester mesh body lining, polyester woven sleeve lining
- Cadet collar
- Tag-free label
- Rib knit inner collar
- Exposed Vislon zipper
- Front zippered pockets
- Left side seam zipper
- Half elastic, half self-fabric cuffs with hook and loop closures for comfort
- Port Pocket™ for easy embroidery access
- Piping and stripes details on front and back of sleeves
- Back vents with hook and loop closures
- Drawcord hem with toggles



front

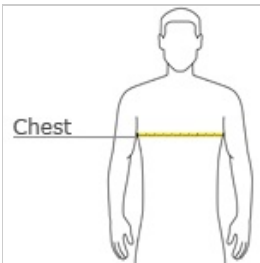


back

CARE INSTRUCTIONS

Machine wash cold. Gentle cycle with like colors. Use mild detergent. Remove immediately. Do not allow to lay on itself when wet. Use only non-chlorine bleach when needed. Tumble dry low. Cool iron if necessary. Do not dry clean.

HOW TO MEASURE







CHEST
With arms down at sides, measure around the upper body, under arms and over the fullest part of the chest.

SIZE CHART

	XS	S	M	L	XL	2XL	3XL	4XL
Chest	32-34	35-37	38-40	41-43	44-46	47-49	50-53	54-57

COLOR INFORMATION

			
Black/ Graphite Grey PMS NTR BLACK C	Black/ True Red PMS NTR BLACK	True Navy/ White PMS 533 C	True Royal/ White PMS 7687 C